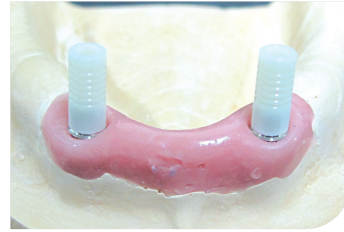


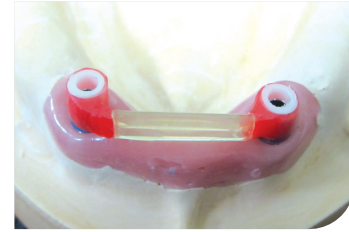
# Implant overdenture bar framework Cases

## Procedure

### Step 1. Wax up

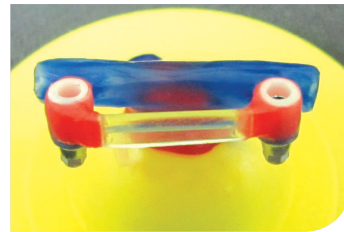


1. Connect

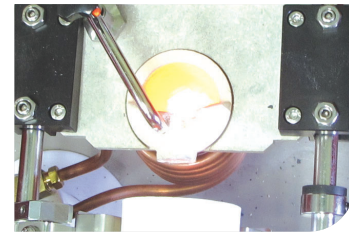


2. Modify and Wax up bar frame

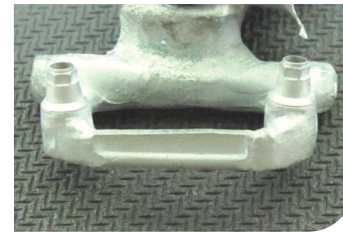
### Step 2. Casting ~ Setting



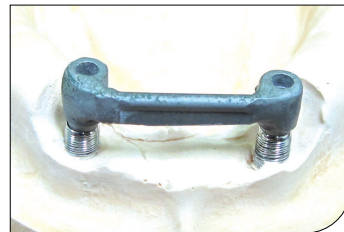
3. Attach sprue to the margin  
(Sufficiently wax up metal portion)



4. Cast with Ni-Cr alloy



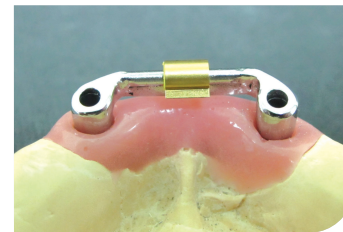
5. Remove oxide layer by glass bead blasting.



6. Confirm passive fit of bar framework.  
\*If the path is off or there is too much cast material, utilize Non-hex connection.



7. Polish and steam clean bar framework.



8. Final bar framework

#### • Contraindications

- Do not use on patients with Ni allergies
- \* NP Cast are casted with Ni-Cr alloy

#### • Precautions

- For single screw retained or overdenture cases where the fixture path is greater than 22°, utilize Convertible
- Not for use in bridge cases with 3 or more units.
- It is strongly recommended to remove the oxide layer.

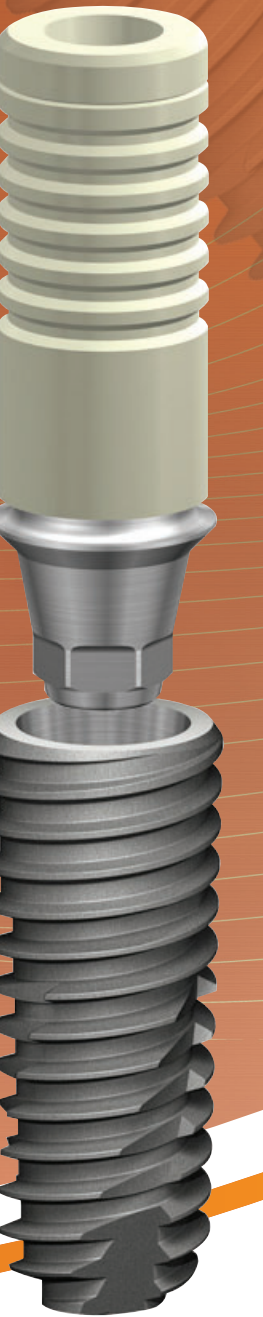
#### • Fabrication Precautions

- Do not cast with Co-Cr alloy. Excessive oxide formation and shrinkage can occur.
- Do not use rubber based tools for removing oxide.
- Take care to sufficiently wax up the metal portion of the and connect sprue at the margin when casting.
- Use Non-Hex type for fabricating greater than 3 screw retained.

Edition 08 / 2013

## TS NP-CAST

## TS NP-CAST



**OSSTEM**<sup>®</sup>  
IMPLANT

**Head office**  
8th FL. WorldMeridian Venture Center II, 426-5,  
Gasam-dong, Geumcheon-gu, Seoul, Korea  
tel\_ 82 2 2016 7000, fax\_ 82 2 2016 7001  
homepage\_ <http://www.osstem.com>

**Manufacturer**  
#507-8, Geoje3-dong, Yeonje-gu  
Busan, Korea. Zip\_ 611-804  
tel\_ 82 51 850 2500  
fax\_ 82 51 861 4693

**OSSTEM**<sup>®</sup>  
IMPLANT



# TS NP-CAST

## 1. Specifications

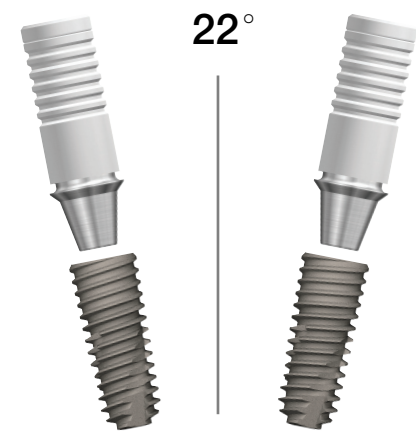
- UCLA type that accepts non-precious metal alloy (Ni-Cr)
- Base material: Co-Cr-Mo Alloy
- Raw material composition (unit: wt%) Co:64.3, Cr:29.1%, Mo:4.72%, Mn:0.66%, Si:0.62%, Fe:0.36%, Al:0.1%
- Mechanical strength: Yield Strength: Over 930Mpa, Break Elongation: Over 26%, Density: 8.72g/cm<sup>3</sup>
- Screw material: Titanium

## 2. Indications

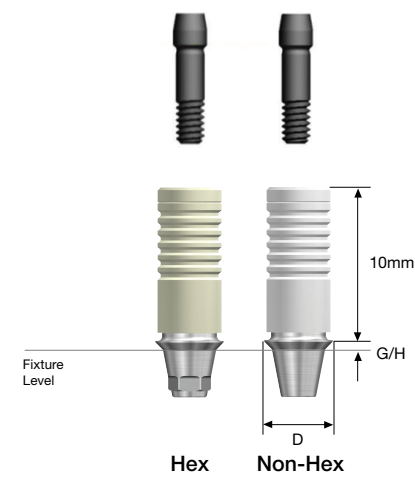
- Custom: Cement retained
- Custom PFM: Screw retained
- Overdenture: Bar framework

## 3. Advantages

- Cost effective alternative to Au alloy
- Better mechanical properties compared to Au alloy



Non-Hexed screw retained type can accommodate up to 22°



### • Product Codes

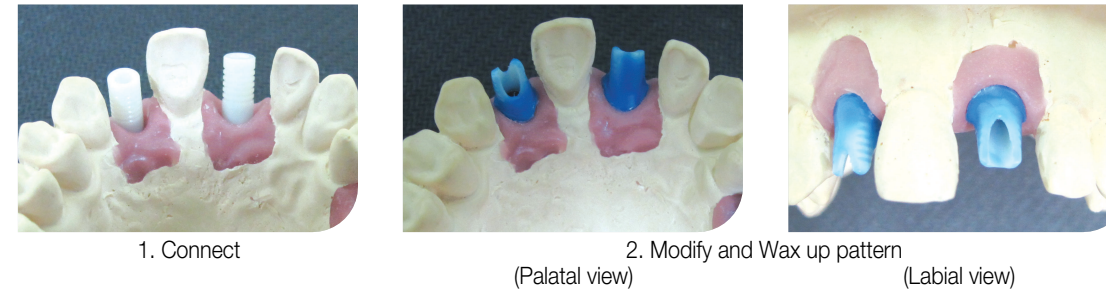
Type	G/H	D	Mini	Regular
			ø 4.0	ø 4.5
Hex	1.0		GSNA4010SWH	GSNA4510SWH
	3.0		GSNA4030SWH	GSNA4530SWH
Non-Hex	1.0		GSNA4010BWH	GSNA4510BWH
	3.0		GSNA4030BWH	GSNA4530BWH



# Custom Cases

## Procedure

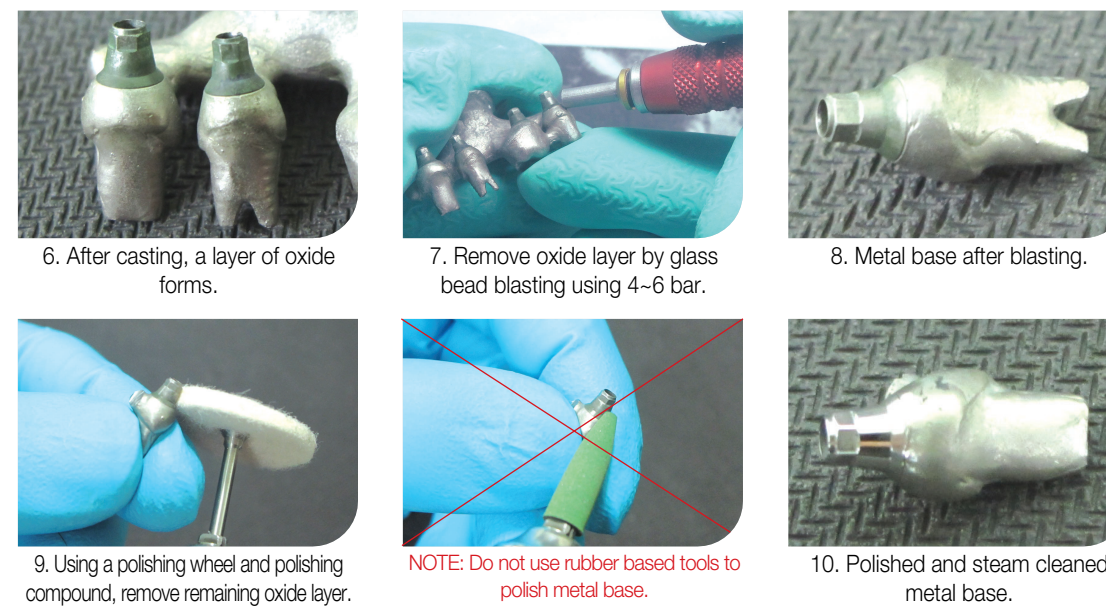
### Step 1. Wax up



### Step 2. Casting



### Step 3. Post Procedure



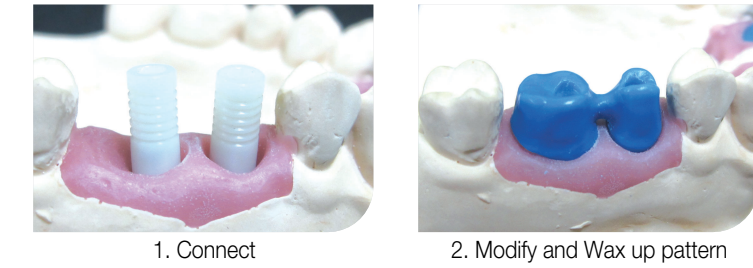
### Step 4. Setting



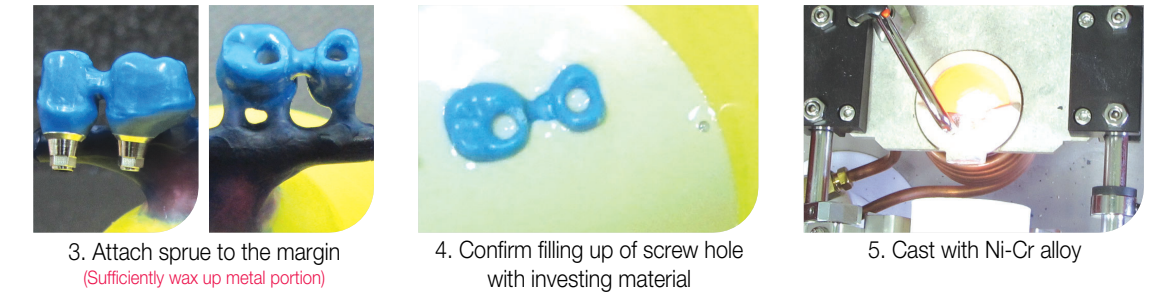
# Screw retained PFM Cases

## Procedure

### Step 1. Wax up



### Step 2. Casting



### Step 3. Porcelain Fabrication & Post Procedures

